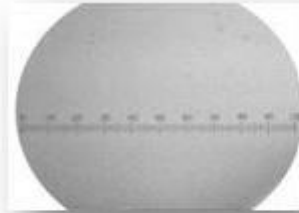
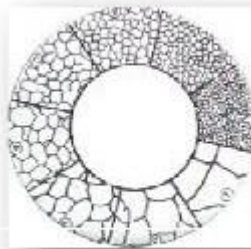


METALLURGICAL MICROSCOPE



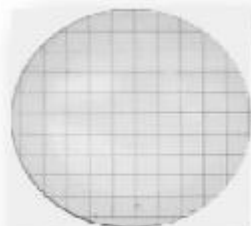
Set of graduated eyepiece :

10mm scale divided into 100 parts is mounted inside 5x and 10x eyepieces. The scale can be focused by movement of the eyepiece cap. These are used for measurement of case depth, decarb depth, flex size etc.



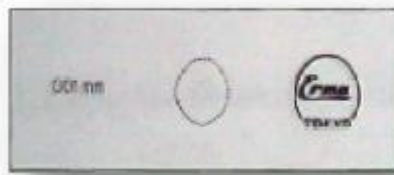
Grain size comparison eyepiece :

Compare specimen grain size of the specimen with standard grain size graticule (size 1 to 8) mounted inside the 10x widefield eyepiece



Grid eyepiece 10x10 :

10x10 square grid graticule mounted in 10x widefield eyepiece helps in determining the distribution of nodules in S.G.Iron



Test scale :

(precision glass scale 1mm divided in 100 parts. useful for verifying accuracy of the graduated eyepieces) Stage micrometer



Transmitted light attachment :

This can be attached to Microscope INBT2, VMM4 & VMM6 only .Transmitted light can be useful for observing metal powders, transparent or semitransparent objects.

Analyser Polriser attachment :

This can be attached to Microscope INBT2, VMM4 & VMM6 only .Polarised light is very useful when observing Non ferrous specimens.



Spare lamps 12V 50W Tungstan halogen :

(6 nos/pack.)



Lens cleaning tissue book :

(for cleaning Microscope optics) (12 nos/pack)



Abrasive cut off machine :

This is an ideal, small & compact machine for cutting specimens for microscopic examination. Its unique Job clamping vice slides against the cutting wheel by a counter weight. Coolant pump is in built.

Cuts sections	upto 70mm
Wheel size	200 mm x 1.5 mm thick
Cutting speed	2000 & 3000 RPM
Motor	1 HP Single phase 220V A/C
Dimensions	650Lx590 B x 400 L mm
Net weight	72 Kgs

Spare cut off wheels :

(Diameter 200 mm x 1.5 mm thick) (12 nos/ Pack)



Cold setting Resin :

When the specimen is of odd shape or size to hold it while polishing it becomes essential to mount it. (One pack Consists Liquid 400 ml + powder 400 gm)

Die Set :

For mounting the specimens with above cold setting They are kept face down in the die set & cold setting resin in 1:1 powder liquid proportion is poured in cavity. Mounted specimens become ready in five minutes. Mould diameter 25,32,38 & 50 mm.Thickness 15mm.



Bakelite Mounting Press:

For mounting the specimens with Bakelite powder Specimen is kept face down in the Cavity & bakelite Powder is Hot moulded around itc with hydraulic pressure. Mould dia 30 mm. With Digital timer. Operates on 220 V A/C Bakelite powder (10 kgs/pack)



Stand for holding polish papers :

(Strips of four different grades of polish papers can be clamped on this stand for hand polishing the specimen)



Belt polisher :

For preliminary surface preparation of metallurgical specimens in the laboratory it is an effective machine. Belt tension is adjustable. Belt can be quickly changed. Adequate safety provided by the belt guard.

Belt size	100mmx910mm endless
Motor	0.25 HP 1440 RPM 220V A/C
Dimensions	460Lx370Bx250H mm



Spare belts for belt polisher:

(size 100 mm Wx 915 mm L Endless) (12 Nos/Pack)